

## Sonozorb SCe

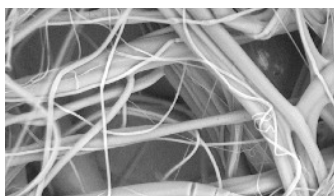
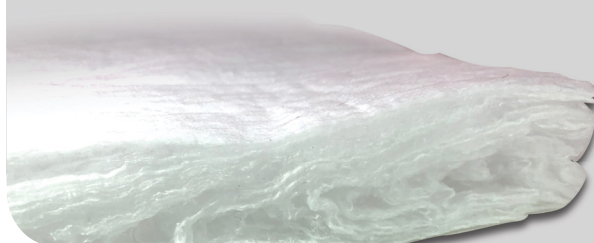
Sonozorb is a light-weight, high-loft polypropylene acoustic insulation that is fully recyclable, naturally hydrophobic and is mold and mildew resistant – all this at a cost that makes Sonozorb the best value in acoustic insulation. Sonozorb is well suited for interior hard trim and exterior applications where moisture absorption is a concern.

### Sonozorb SCe Grades

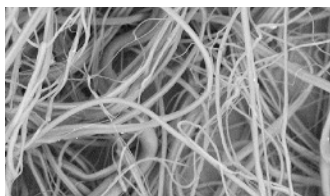
GRADE	THICKNESS	Weight	DESCRIPTION
10SCe	10mm	172 g/m2	Non-Sided
14SCe	14mm	247 g/m2	Non-Sided
19SCe	19mm	366 g/m2	Non-Sided
25SCe	25mm	484 g/m2	Non-Sided
35SCe	35mm	753 g/m2	Non-Sided
45SCe	45mm	968 g/m2	Non-Sided

### Advantages

- Performance:** Superior acoustic performance at the same weight as other products
- Edge/Zone Control:** Sonozorb may be processed with sealed edges and 3D designs with no added cost  
Double-sided scrim. Symmetric parts are non-sided
- Improved Loft:** Loft retention over previous grades with C-shaped fiber provides improved performance



CURRENT PP



SONOZORB SCE

### Fiber Diameter

**NEW!** Melt blown technology allows GDC to consistently produce finer fibers than other melt blown PP and PET products.

# Data Sheet: Sonozorb SCe

Formulation: Polypropylene melt blow fibers

## Material Properties:

**Composition:** 100 % PP non-woven

**Scrim:** Scrim 2 sides

**Color:** White or Gray

**Thickness:** 10-25mm  $\pm$  3 mm

**Weight per unit area:** 172-484g/m<sup>2</sup>  $\pm$  10%

## Attachment Method:

- Ultrasonic welding
- Heat staking
- Hot melt
- Pressure sensitive adhesive

## Material Testing:

**Flammability (FMVSS302):** < 100 mm/min (SE)

**Media resistance:** Water without effect, other media on request.

**Mildew:** Naturally Hydrophobic

**Temperature:** - 40°C — 110°C

**Restricted Substances:** None

## Delivery As:

- Finished Parts (Die cut)

## Storage:

**Preferred storage temp.:** 0 °C – 35 °C

**Max. storage time:** No Limit



**A DRIVING FORCE IN AUTOMOTIVE  
COMPONENTS**

As a Tier 1 and 2 supplier, GDC is a trusted partner of many of the biggest names in the auto industry. We have excelled in product development and production through innovative materials and processes, tight vertical integration, engineering expertise and careful analysis of customer needs. Our true value lies in our abilities that extend far beyond production. Our engineering prowess and Total Project Management capabilities deliver innovative solutions and a seamless development, production and delivery process.

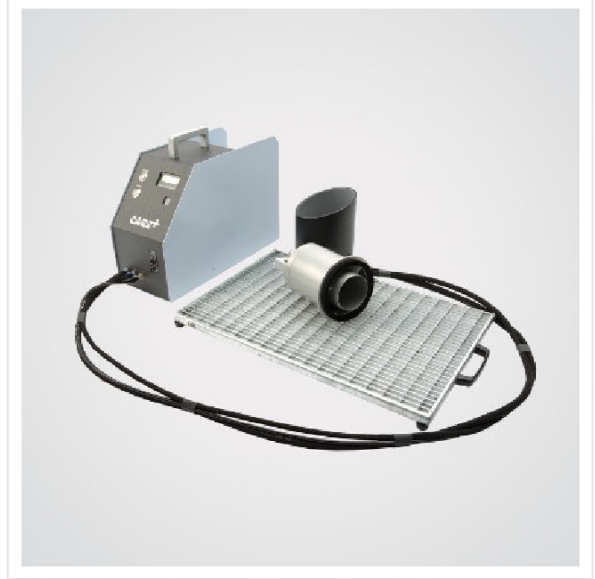
# Advantages

## VERTICAL INTEGRATION

GDC has invested in state-of-the-art melt blown lines

## CAPABILITIES

- Material Development
- IN-House SEM
- Autoneum CARE+
- IN-House Acoustics Lab
- Climate Controlled Production



## PERFORMANCE

- Product Consistency
- Fiber Diameter
- Loft
- AFR
- Stringent COA
- Attached Scrim

## EXPERTISE

GDC's Acoustical Engineers and Project Managers are truly acoustical experts. We provide knowledge and expertise that other converters simply can't provide.



Our Novi sales & engineering office offers experienced staff along with design services, prototype, and program management capabilities.

**Contact GDC Sales & Engineering at 248-504-5220**